

Windows 10 and Bluetooth connection with GNSS device

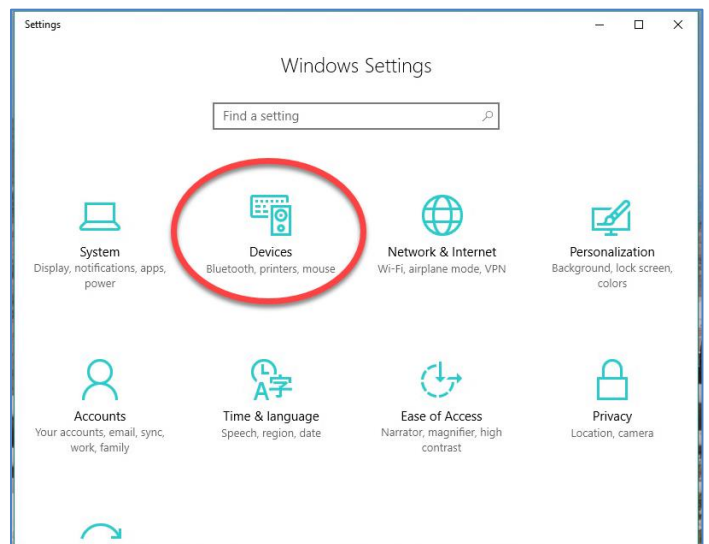
This guide will describe how to establish Bluetooth connection with the following:

- SXBlue GNSS receiver or other GNSS devices
- Computer running under Windows 10

Step 1 : Windows Settings

From the **Start** menu of Windows 10, Go to **Windows settings**

Select **Devices (Bluetooth, ...)**

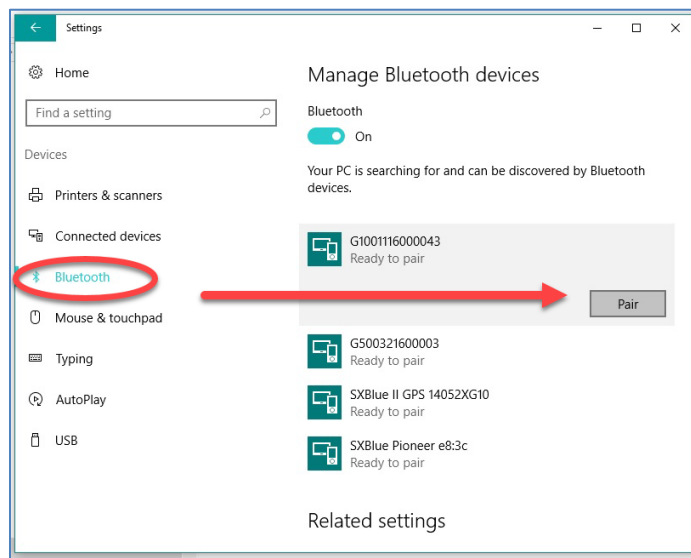


Step 2 : Pairing Device

From the left panel, select **Bluetooth**

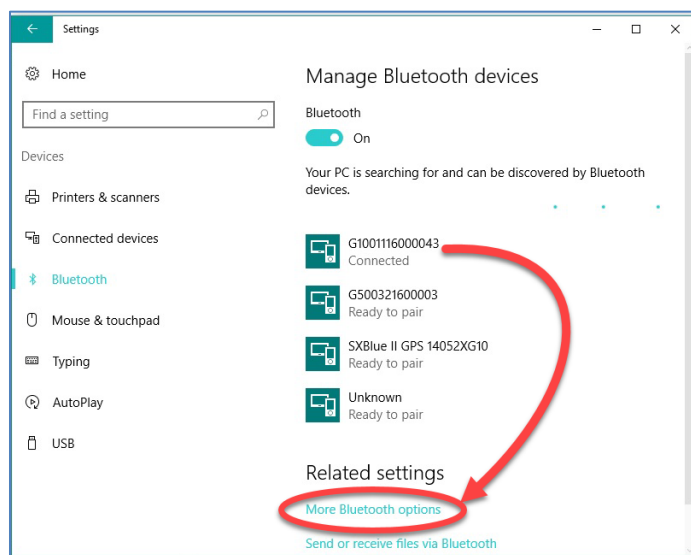
Pair the SXBlue receiver or other GNSS device (G10)

Enter the passcode 12345678 (for SXBlue) or accept the default code if your device doesn't require one



Step 3: Bluetooth Configuration

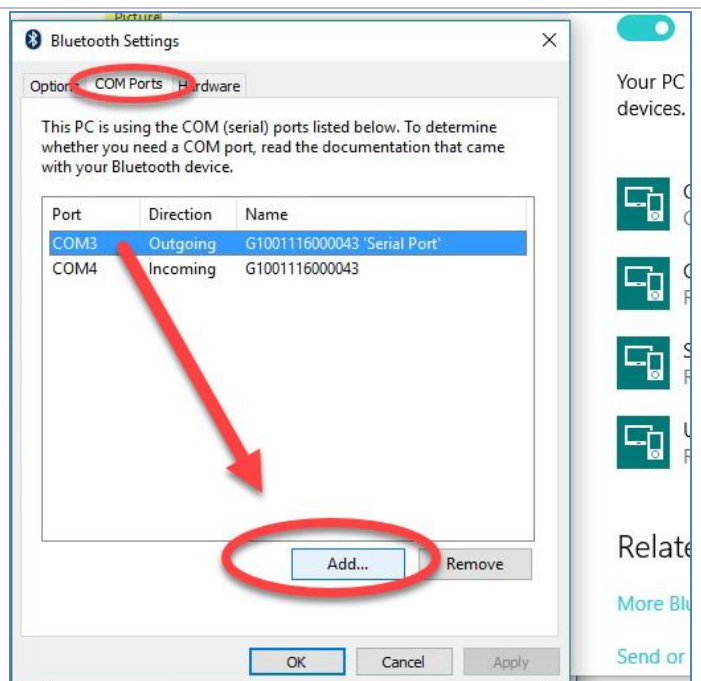
On the bottom of the screen, press **More Bluetooth Options**



Step 4: Bluetooth Configuration

From **Bluetooth Settings** screen, select **COM Ports** tab

Select the **COMxx Outgoing** direction, and press **Add...** button

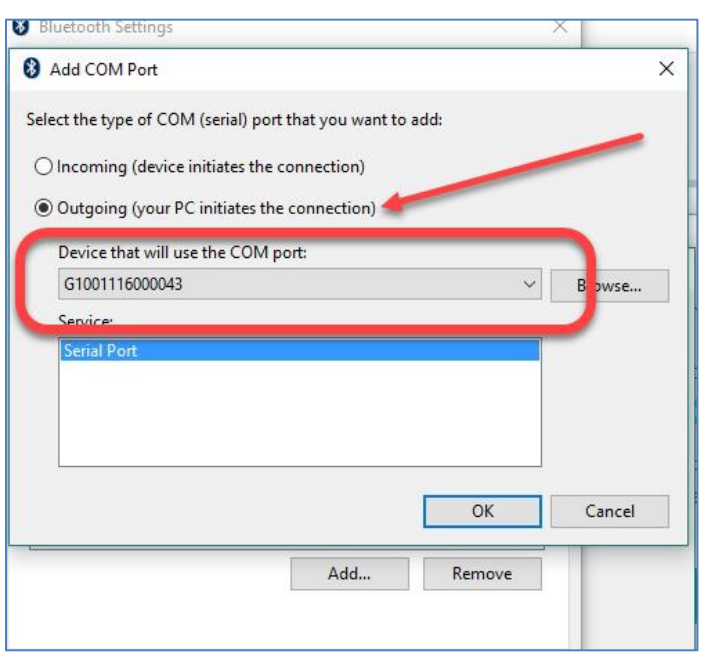


Step 5: Bluetooth Configuration

Select **Outgoing** (your PC initiates the connection)

From the scroll down list (Device that will use the COM port:), select the SXBlue receiver or other GNSS device (G10) and press **OK**

Finally, press **OK** again on the bottom of the **Bluetooth Settings** screen.



Step 6: Bluetooth Connection

Launch the SXBlue Config software or any other Survey software (FieldGenius) in order to establish the connection.

On **Serial Port Settings**, select the same **COMxx Outgoing** you have used on the step 4

Try to connect with Baud Rate 115200 and Normal Mode

