

## SXpad 800H Configuration

### Items included in the box:

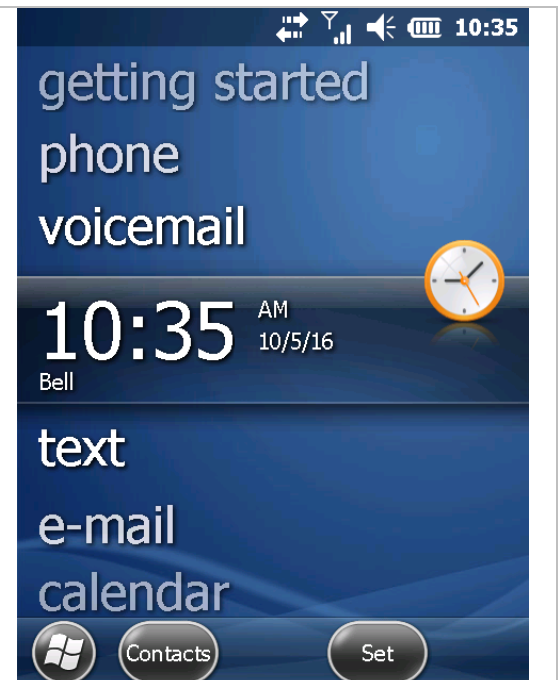
- 1 SXpad 800H unit
- 2 batteries
- 1 battery charger (2 slot) with cable
- 1 USB/mini USB adaptor
- 1 stylus
- 1 USB cable
- 1 screen prtector

## Setup SXpad 800H

### Step 1 : Start

Insert battery and SIM card into SXpad battery compartment.

Turn ON SXpad and have Windows Mobile started.



## Step 2 : Modem Configuration

Configure Wireless connections using the following:

Start → Settings → Connections → Wireless Manager

On **Wireless Manager** page, select:

**Bluetooth**  
**Phone**

See picture to the right.

Close windows to come back on the main display.



## Step 3 : Modem Configuration

Configure modem with the following :

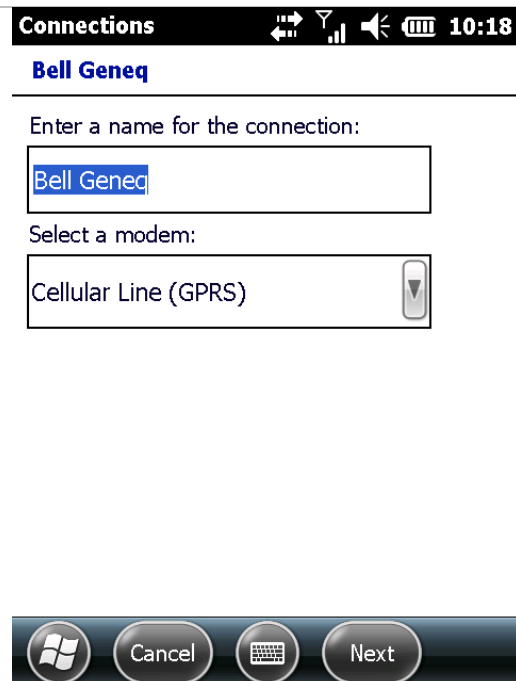
Start → Settings → Connections → Connections.

On **My ISP** item, select:

**Add a new modem connection**

Enter information related to internet (cellular) provider as shown in picture to the right.

Press **Next** button.



### Step 4 : Modem Configuration

On **Access point name** (APN) item, enter APN related to internet (cellular) provider as shown in picture to the right.

Press **Next** button.

Connections     10:21

**Bell Geneq**

Access point name:

pda.bell.ca



Back



Next

### Step 5 : Modem Configuration

On **User name** item: wapuser1 (Rogers user only)

On **Password** item: wap (Rogers user only)

Press **Finish** button.

Connections     10:26

**Bell Geneq**

User name:

Password:

Domain:\*

\* If provided by ISP or network administrator.

Advanced...



Back



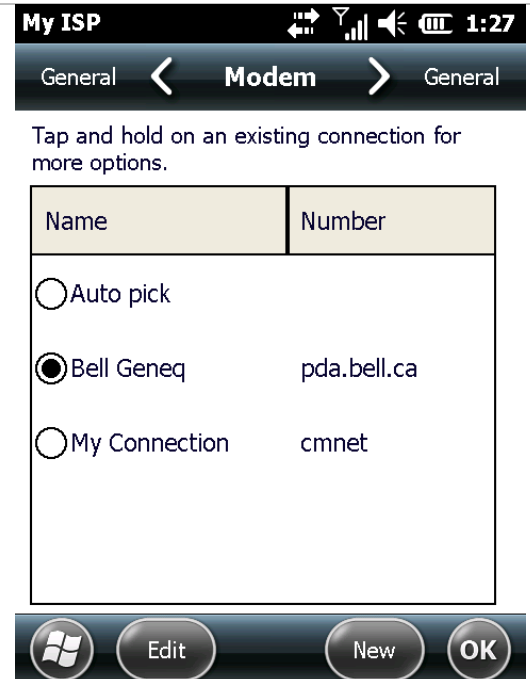
Finish

## Step 6 : Modem Configuration

Back on **Connections** page, select:  
**Manage existing connections**

Select the connection and press **OK** button (2 times).

Close windows to come back at the main display.

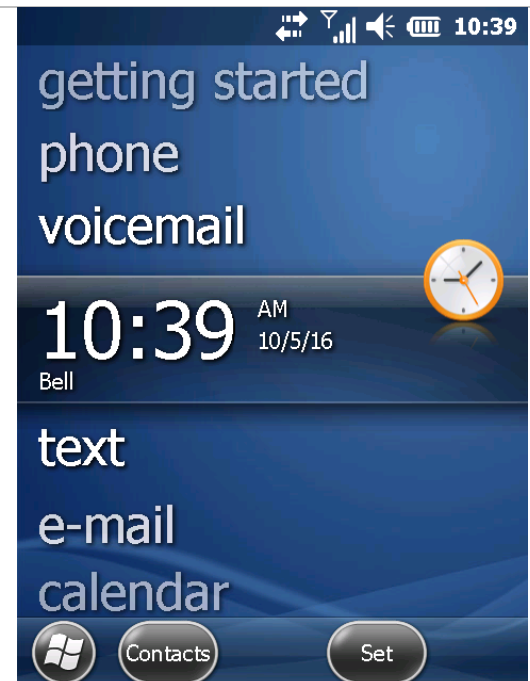


## Step 7 : Check modem status

Cellular signal strength icon should be visible on the upper part of the screen, as shown in picture to the right.

Internet (cellular) provider name should appear on the middle of the screen.

In order to check the SIM card and the modem, make test using phone function.



## Step 8 : Check GPS

Connect internal GPS using the following :

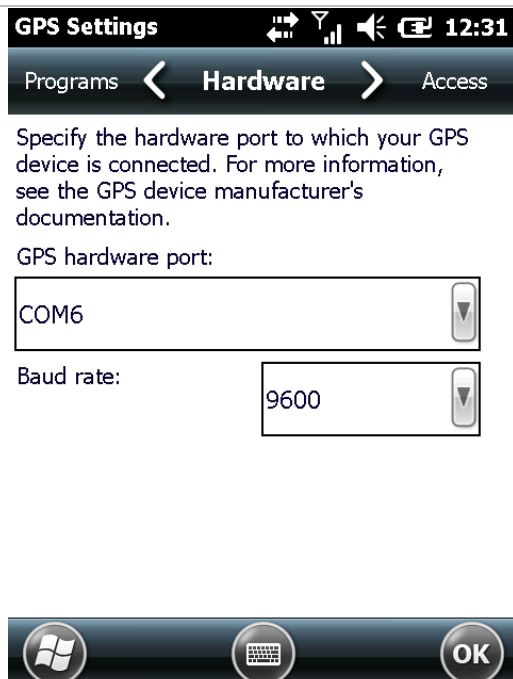
Start → Settings → System → External GPS.

Programs (software) : COM3

Hardware : COM6, Baud rate : 9600

Press **OK** button.

Close windows to come back at the main display.



## Step 9 : GNSS Profil

To check GPS, use positioning application. Demo version of FieldGenius can be used.

Start → FieldGenius

Open project.

Select instrument → GNSS Rover (Instrument Type) → Add new profile → Press **Edit** button.

